

FND EX REBAR AND CAP
LS NO. 20764. 0.26' N'LY X
0.18' E'LY.

FND EX REBAR AND AND
CAP. LS NO. 20764. 0.25' S'LY
X 0.18' E'LY.

12' ACCESS EASEMENT PER SURVEY REC AF NO. 8700099005.
CALLED OUT IN EASEMENT AND MAINTENANCE AGREEMENT
REC UNDER NO. 8801291110.

FND ORIGINAL MEYRING
REBAR AND CAP. LS NO
2621. 0.16' N'LY X 0.08'
W'LY OF CALC'D
POSITION.

FND. TL & LEAD
0.6' S'LY X 0.7' W'LY
N 88°49'04" W
20.00'

FND. TL & LEAD
0.4' S'LY X 0.5' W'LY

FND. EX. YCRB
LS NO 16230
0.5' S'LY X 0.7' W'LY

FND. EX. YCRB
LS NO 16230
0.4' S'LY X 0.8' W'LY

FND. EX. YCRB
LS NO 16230
0.4' S'LY X 0.5' W'LY

FND. EX. YCRB
LS NO 16230
0.4' S'LY X 0.5' W'LY

EX DOCK

EX DOCK

EX DOCK

EX BOAT LIFT

EX DOCK
(SEE DETAIL A)
(BELOW LEFT)

LAKE WASHINGTON
2nd CLASS SHORELANDS

SET G4 REBAR AND CAP
1.15' W'LY ALONG P
EXTENDED FROM NE
PROP. COR. 8-22-13

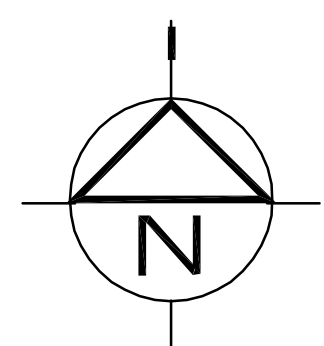
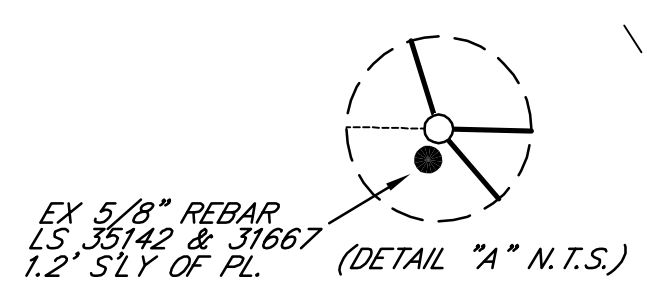
4' CHAINLINK
FENCE

EX DOCK

LINE OF NAVIGABILITY
PER MAP REC. 8801289004

LINE OF ORDINARY HIGH WATER

- ① KEYSTONE WALL IS SITUATED OVER NW'LY PROP. COR.
- ② KEYSTONE WALL CROSSES N'LY P 20.9' E'LY OF NW'LY PROP. COR. SE'LY COR IS 0.2'S OFF P
- ③ E. END OF KEYSTONE WALL CROSSES N'LY P 0.5' W OF PROP. COR. ANGLE POINT AND SOUTH FACE OF WALL CROSSES P 8.7' W OF ANGLE POINT PROP. COR. S. EDGE OF WALL IS 0.4'S OF P
- ④ S. EDGE OF CONC. PATH CROSS N'LY P 22.0' NE'LY & 25.9' NE'LY OF ANGLE POINT PROP. COR. ANGLE POINT IS 0.77' SE'LY OF P
- ⑤ S. EDGE OF CONC. PATH CROSS N'LY P 9.2' SW'LY ANGLE POINT PROP. COR. CONC. PATH ANGLE POINT IS 0.04'S OF P
- ⑥ S. EDGE OF CONC. PATH CROSS N'LY P 1.2' E'LY OF ANGLE POINT PROP. COR. AND THE CONC. PATH ANGLE POINT IS 0.12'S OF P



SCALE 1" = 30'



LEGEND

- ⊕ SUBDIV. CORNER/FOUND
- ⊖ SUBDIV. CORNER/NOT FOUND
- FOUND CONC. MON. IN CASE
- FOUND SURFACE MON.
- EXISTING CAPPED REBAR
- SET CAPPED REBAR LS #30450
- SET LINE STAKE

